

Como Realizar a migração do PCWORX para PLCnext Engineer



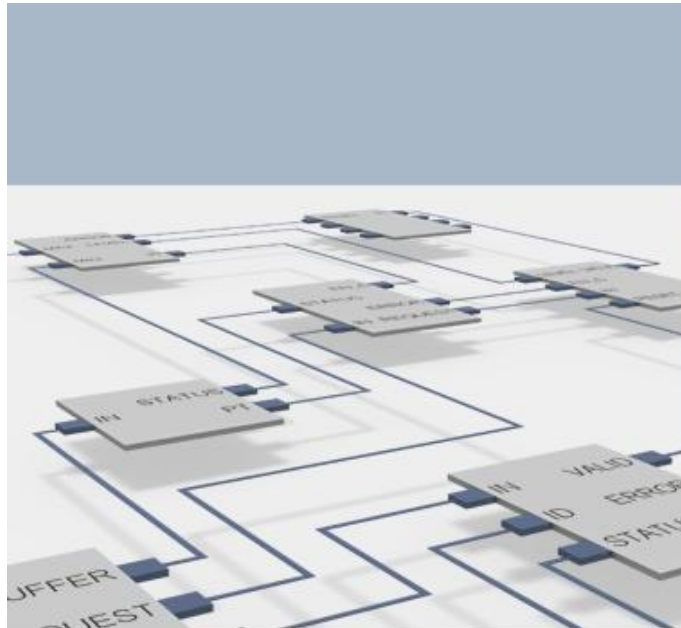
INTRODUÇÃO

A migração dos programas e functions blocks do PCWORX para o PLCnext Engineer é basicamente feita através da exportação e importação de arquivo PLC Open XML.

Dependendo da complexidade e as funções utilizadas na plataforma PCWORX alguns ajustes serão necessários após a migração de plataforma.

A funcionalidade de exportação NÃO é possível fazer no PCWORX EXPRESS.

Abra o projeto no PCWORX



PC WORX

PLC Programming

Version 6.30.2519

Copyright 2019

PHOENIX CONTACT GmbH & Co. KG
32823 Blomberg

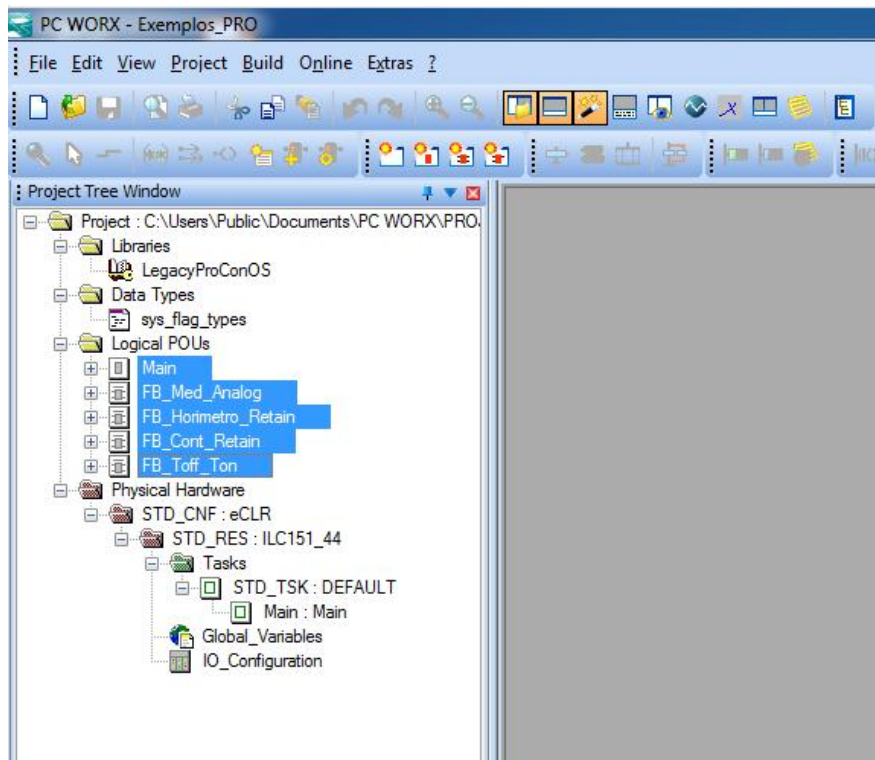
For up-to-date software versions
and error removals, visit
www.phoenixcontact.com



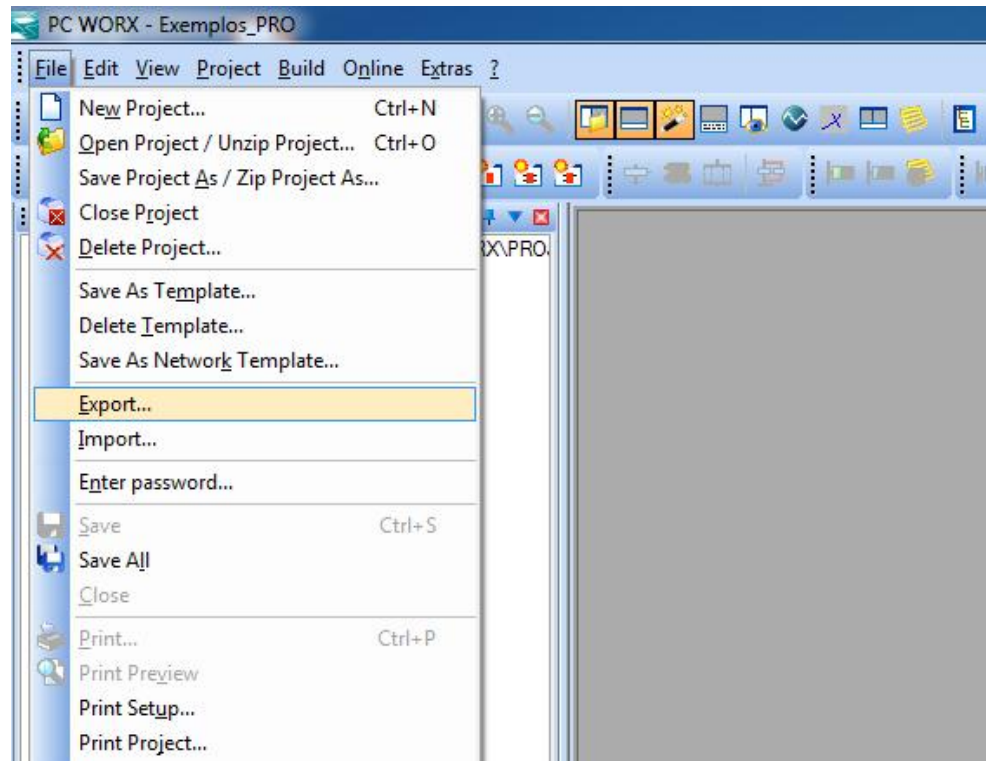
**PHOENIX
CONTACT**
INSPIRING INNOVATIONS



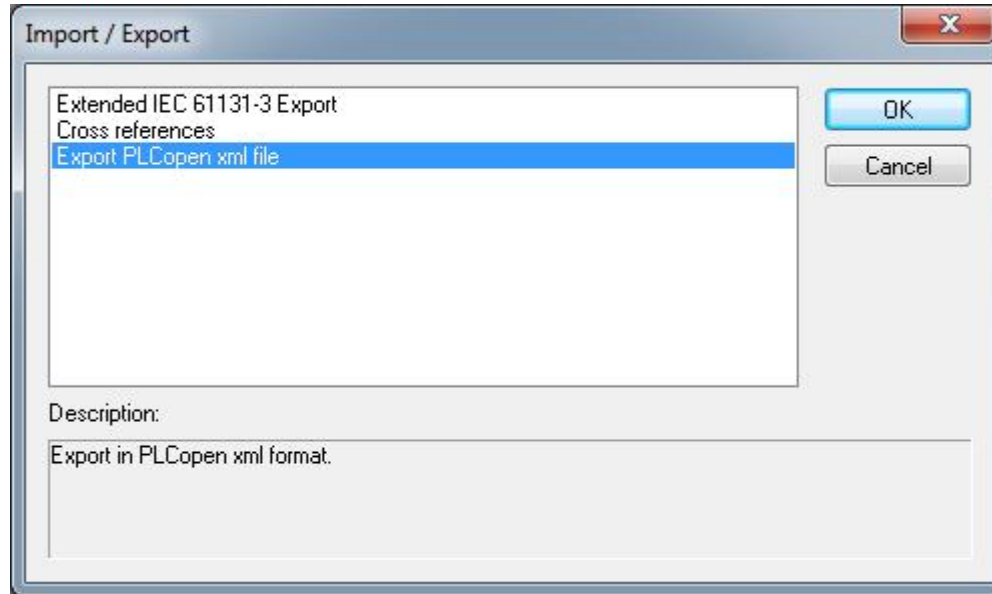
Passo 1: Selezione os PROGRAMAS e FUNCTIONS BLOCKS



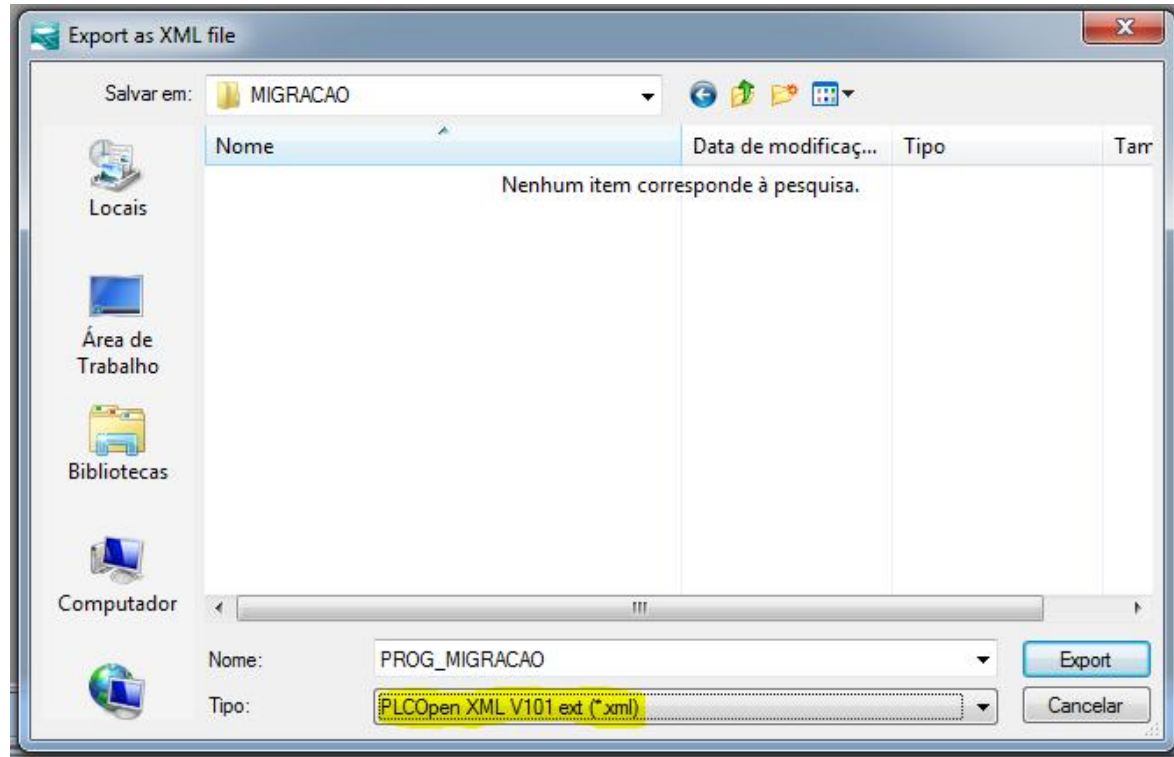
Passo 2: Opção “Export...”



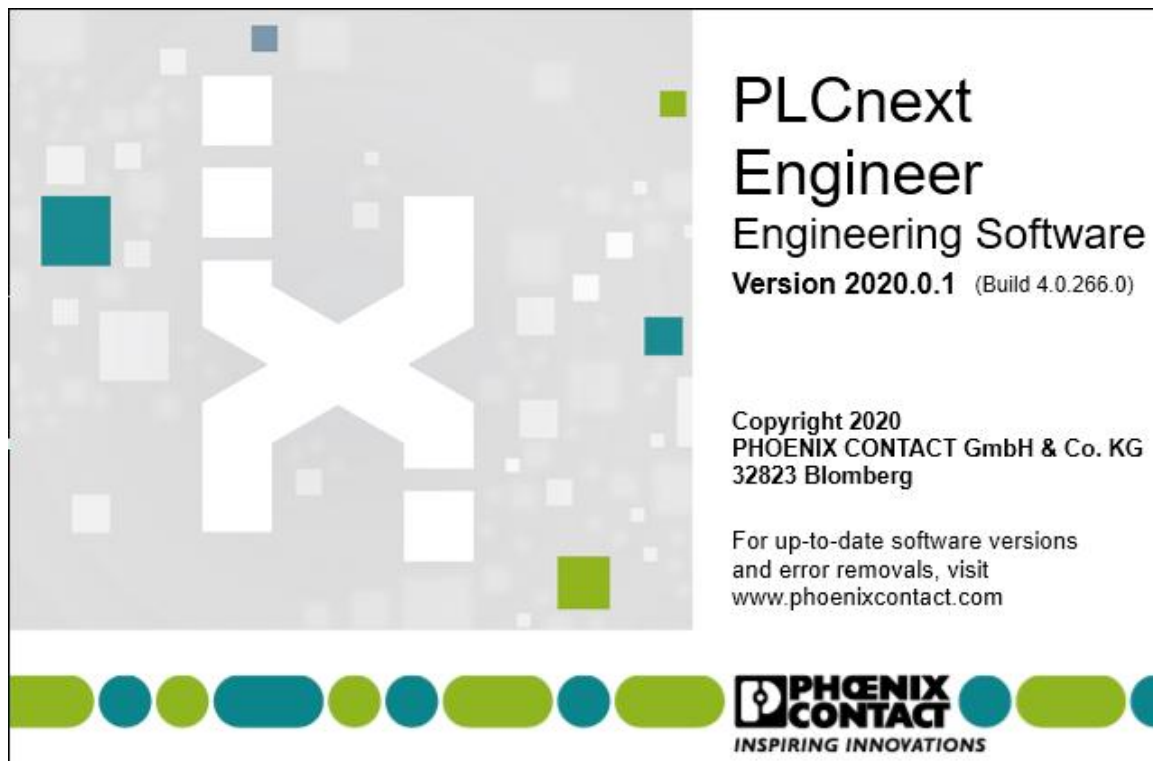
Passo 3: Opção "Export PLCopen xml file"



Passo 4: Nome do arquivo e tipo **PLCOpen XML V101 ext**



Passo 5: Abra o PLCnext Engineer

The image shows the splash screen of the PLCnext Engineer software. On the left, there is a large, stylized white 'X' logo on a light gray background with scattered small squares in white, teal, and green. To the right of the logo, the text reads: 'PLCnext Engineer Engineering Software Version 2020.0.1 (Build 4.0.266.0)'. Below this, it says 'Copyright 2020 PHOENIX CONTACT GmbH & Co. KG 32823 Blomberg'. At the bottom, there is a row of colorful circles and ovals in shades of green and teal, followed by the Phoenix Contact logo and the tagline 'INSPIRING INNOVATIONS'.

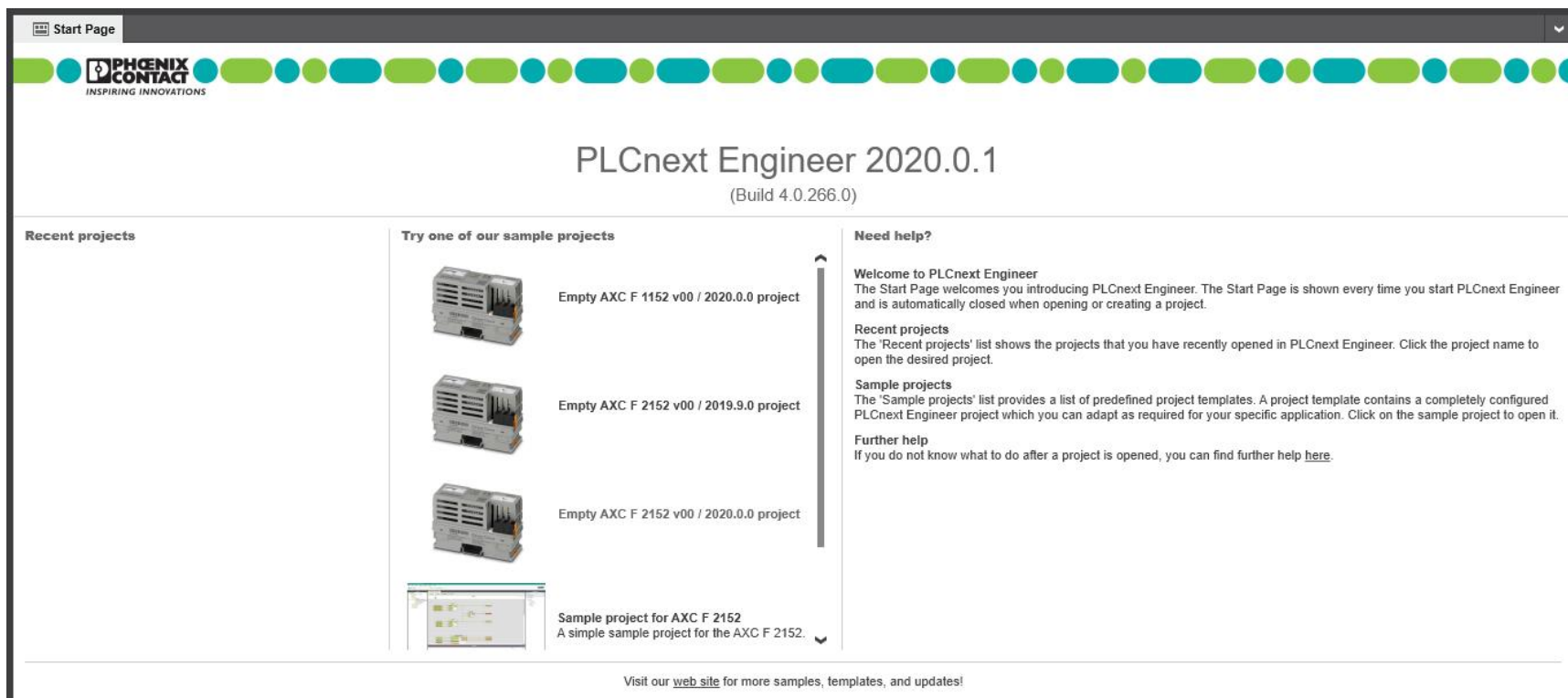
**PLCnext
Engineer**
Engineering Software
Version 2020.0.1 (Build 4.0.266.0)

Copyright 2020
PHOENIX CONTACT GmbH & Co. KG
32823 Blomberg

For up-to-date software versions
and error removals, visit
www.phoenixcontact.com

**PHOENIX
CONTACT**
INSPIRING INNOVATIONS

Passo 6: Seleção a versão de hardware



Start Page


PHOENIX CONTACT
INSPIRING INNOVATIONS


PLCnext Engineer 2020.0.1


(Build 4.0.266.0)


Recent projects

Try one of our sample projects

 Empty AXC F 1152 v00 / 2020.0.0 project

 Empty AXC F 2152 v00 / 2019.9.0 project

 Empty AXC F 2152 v00 / 2020.0.0 project

 Sample project for AXC F 2152
A simple sample project for the AXC F 2152.

Need help?

Welcome to PLCnext Engineer
The Start Page welcomes you introducing PLCnext Engineer. The Start Page is shown every time you start PLCnext Engineer and is automatically closed when opening or creating a project.

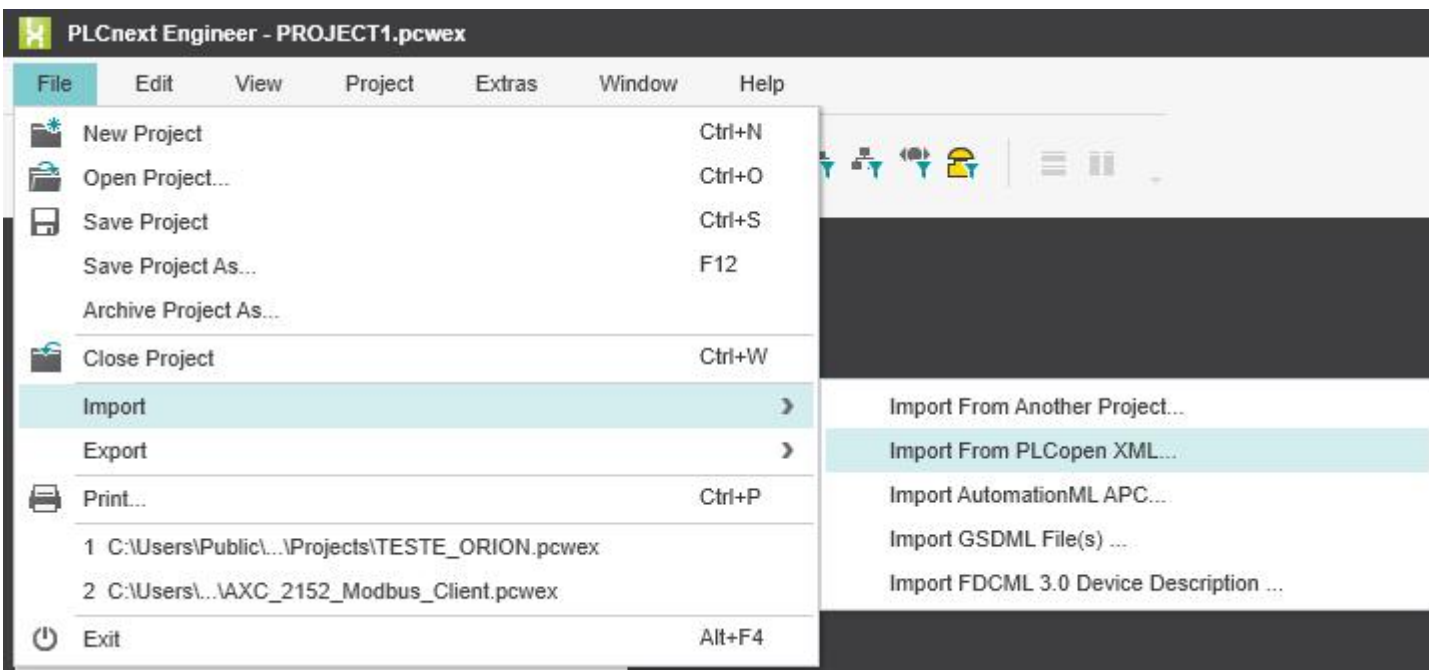
Recent projects
The 'Recent projects' list shows the projects that you have recently opened in PLCnext Engineer. Click the project name to open the desired project.

Sample projects
The 'Sample projects' list provides a list of predefined project templates. A project template contains a completely configured PLCnext Engineer project which you can adapt as required for your specific application. Click on the sample project to open it.

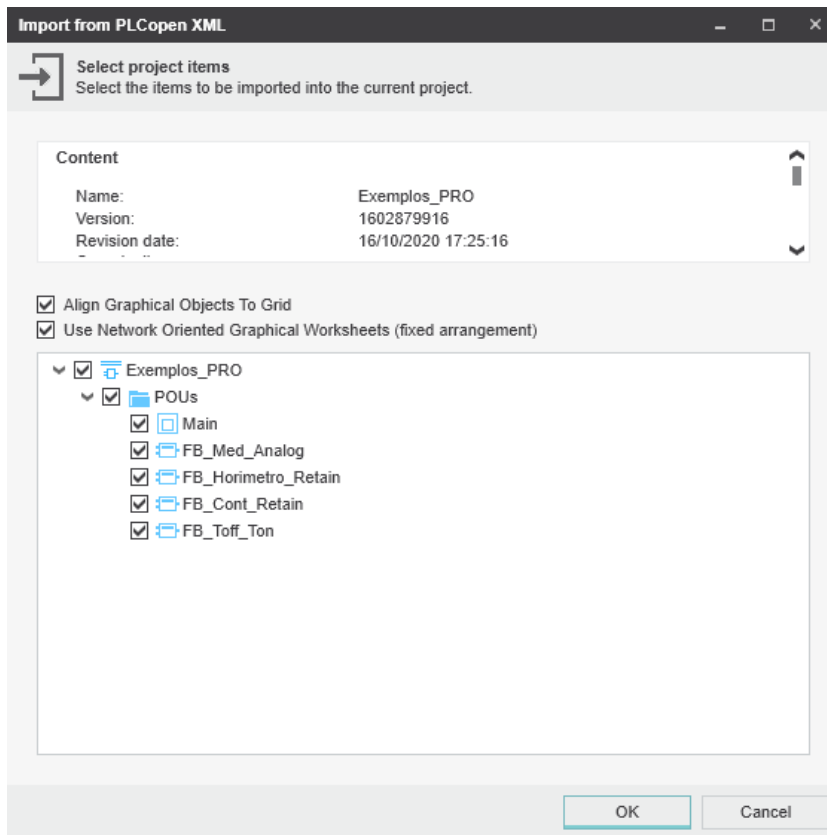
Further help
If you do not know what to do after a project is opened, you can find further help [here](#).

Visit our [web site](#) for more samples, templates, and updates!

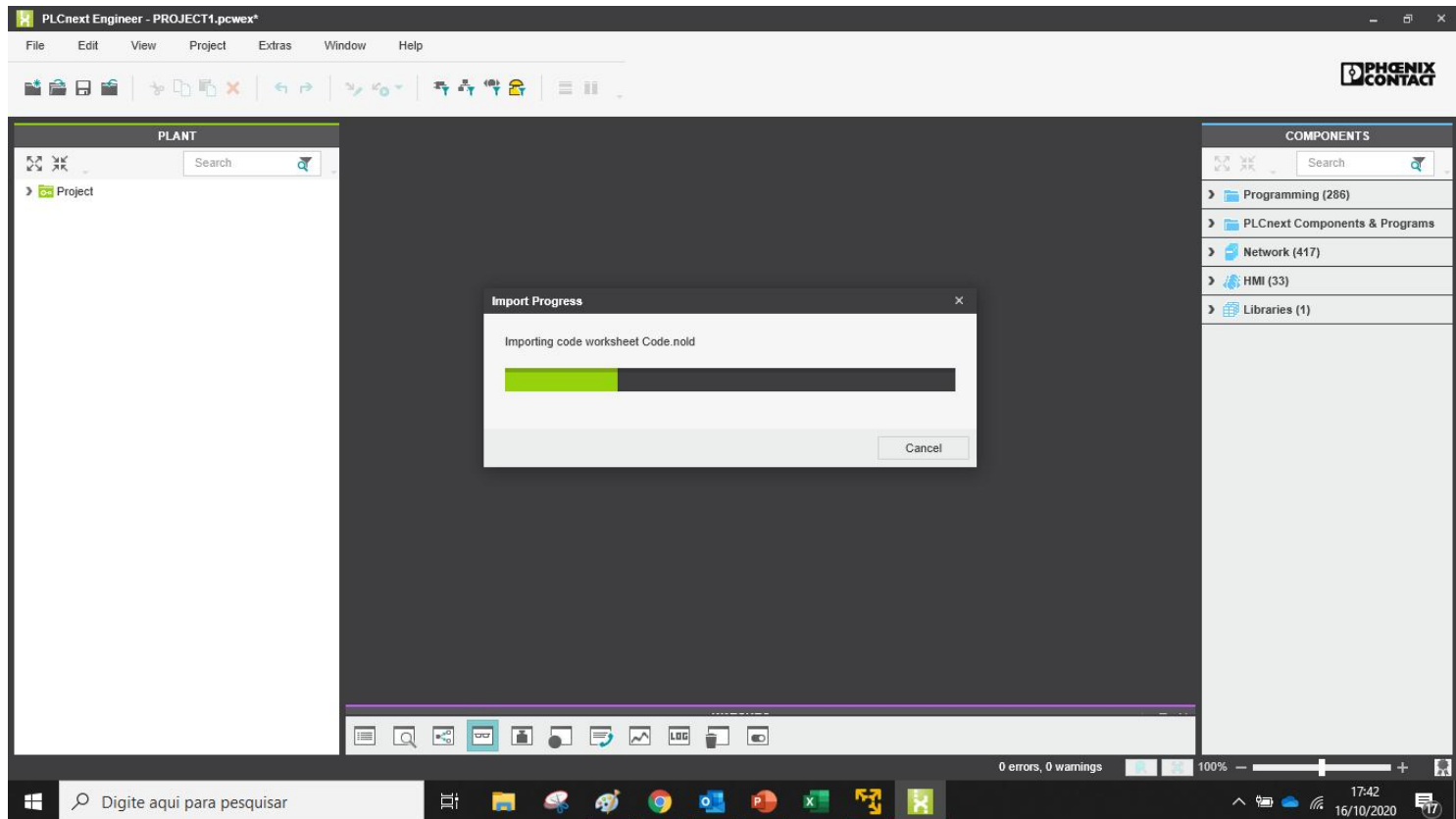
Passo 7: Opção "Import" / Import From PLCopen XML...



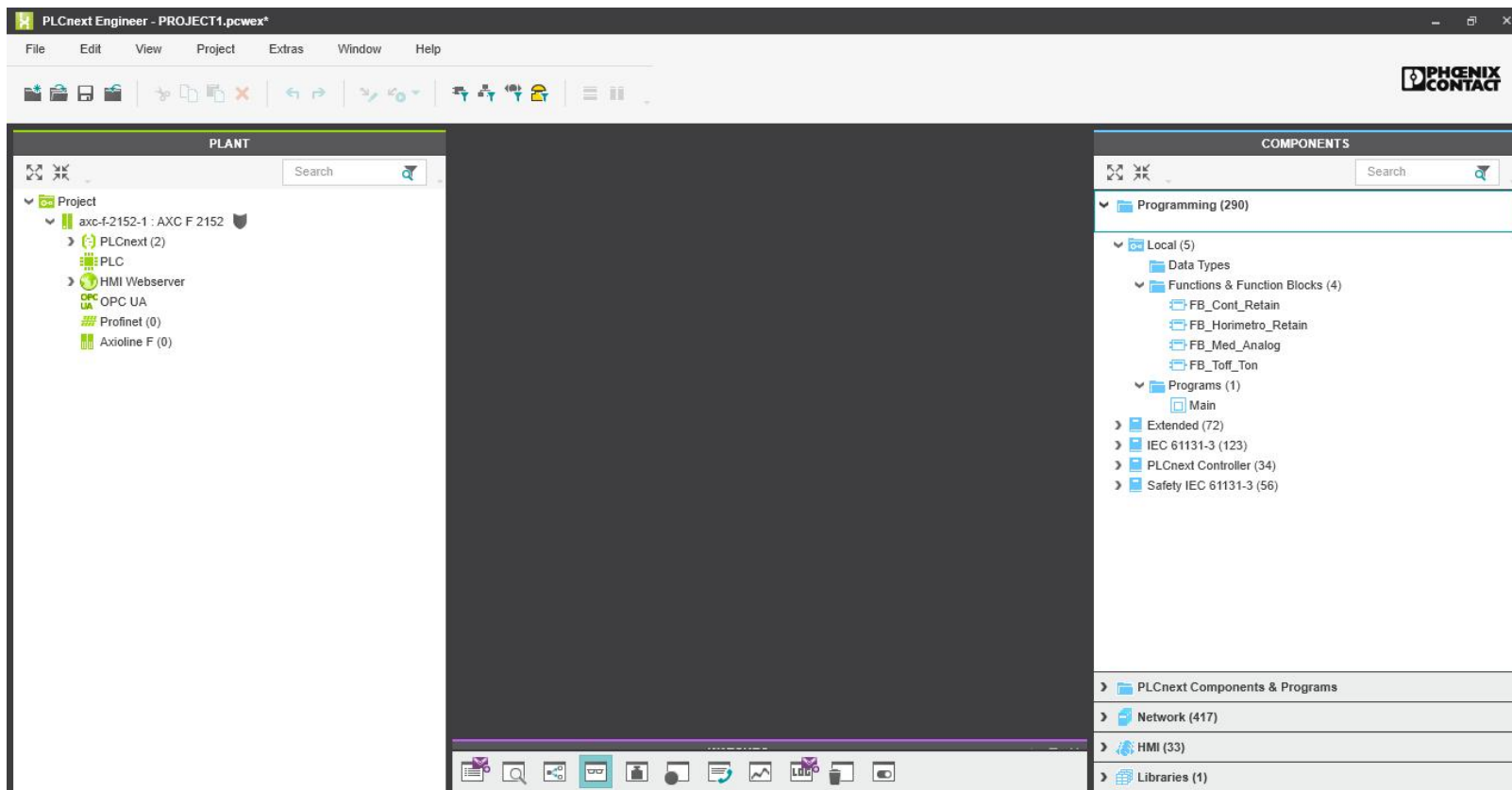
Passo 8: Marque/Desmarque de acordo a preferência



Processando...



Pronto...



Pronto!!!

Migração realizada com sucesso.
Agora você já pode usufruir de todas funcionalidades
diferenciais do PLCnext Engineer.



INSPIRING INNOVATIONS

www.phoenixcontact.com.br