

Guia de configuração dos drives comunicação das IHMs da família BTP 2000 com CLP Rockwell



EtherNet/IP



Conhecendo a família de IHM BTP 2000 – Basic Touch Panel



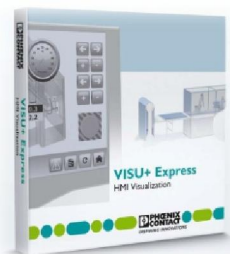
10,2"



7"



4,3"



BTP 2000	BTP 2043W 1050387	BTP 2070W 1046666	BTP 2102W 1046667
Tipo do Dispositivo	IHM	IHM	IHM
Display	4,3"	7,0"	10,2"
Cores	262.144		
Resolução	480x272 (WQVGA)	800X480 (WVGA)	
Tecnologia Touch	Analógico resistivo		
Grau IP	IP66 / IP20		
Portas Ethernet	1 x 1/100 Mbps	1 x 1/100 Mbps	1 x 1/100 Mbps
Porta SD	1 x SD	1 x SD	1 x SD
Porta USB Host	1 x USB	1 x USB	1 x USB
Porta USB Device	1 x USB	1 x USB	1 x USB
Porta COM - RS232/422/485	1	1	1
Programação - PC WORX	VISU +	VISU +	VISU +
Telas e Tags de visualização	16 Telas - 256 Bytes		
Processador	ARM ® 9 i.MX28, 454 MHz		
Sistema Operacional	Windows CE 6.0		
Memória	128 MB RAM, 512 MB Flash		

Download do software SCADA – Visu+ 2 EXPRESS

Software - VISU+ 2 EXPRESS - 2402774



Ambiente de desenvolvimento para todos os painéis táteis com Runtime integrado do software de visualização Visu+.

[Criar PDF](#)

[Visão geral](#)

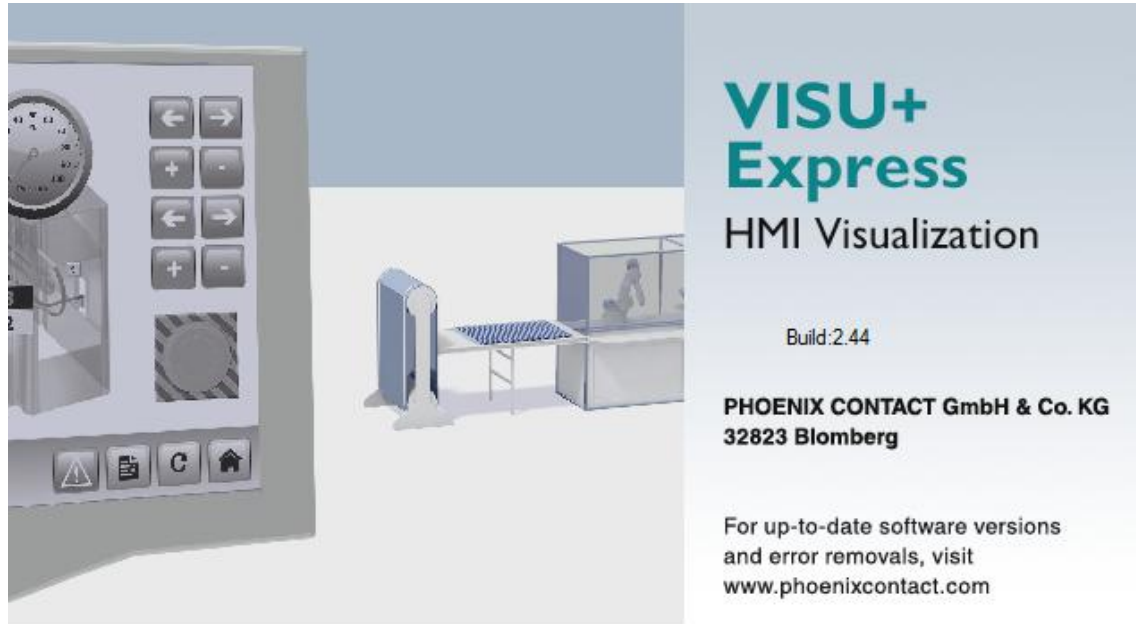
[Dados técnicos](#)

[Downloads](#)

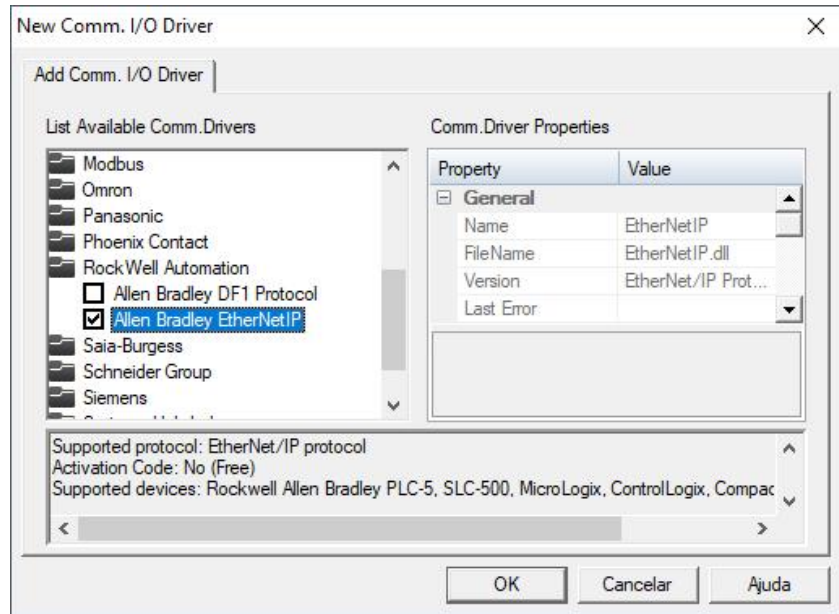
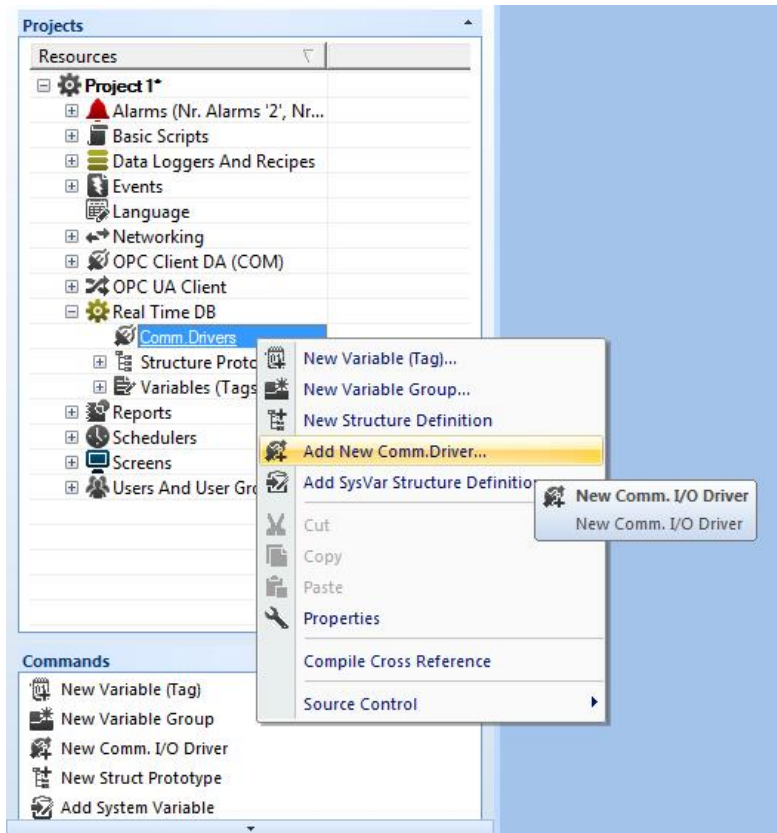
Software

	Descrição	Idioma	Versão
<input type="checkbox"/>	<p>[zip, 824 MB] Software</p> <p>O Visu+ Express 2.52 oferece como novidade o suporte para comunicação OPC UA e a tecnologia HTML5 dentro da funcionalidade WebClient. Além do mais, a versão inclui a correção de erros, melhorias da estabilidade do sistema, modelos de equipamento atualizados e otimizações do manuseio da engenharia.</p> <hr/> <p>SHA256 Checksum: 0f37cc306b11fa9b6d0140fb800fbec143c088b21211c5693315b27a640a169c visu_plus_express_2.52.1200.16.zip</p>	Internacional	2.52

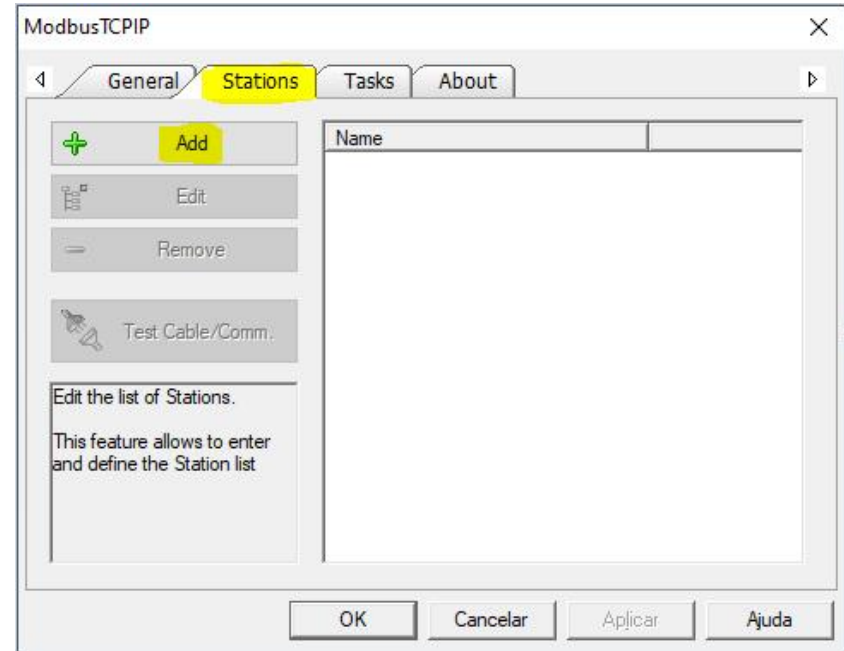
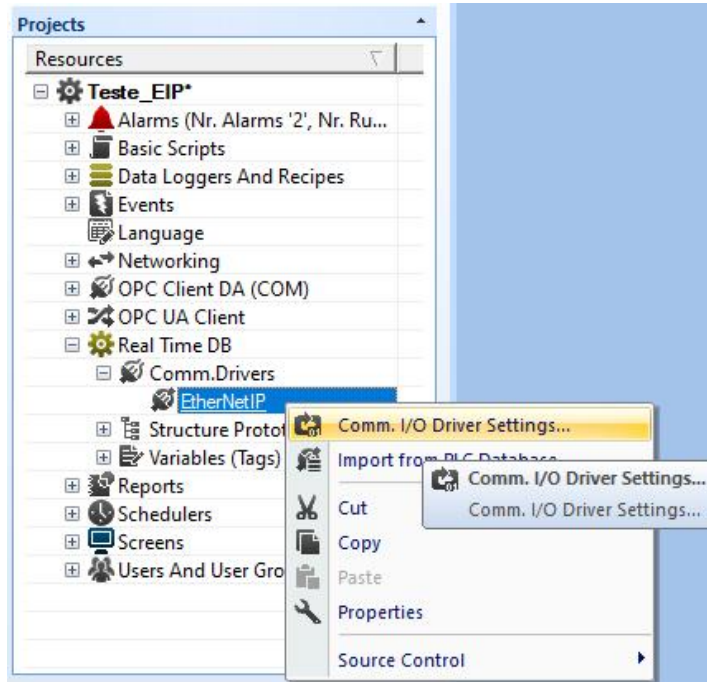
Iniciando um Projeto no Visu+ 2 Express



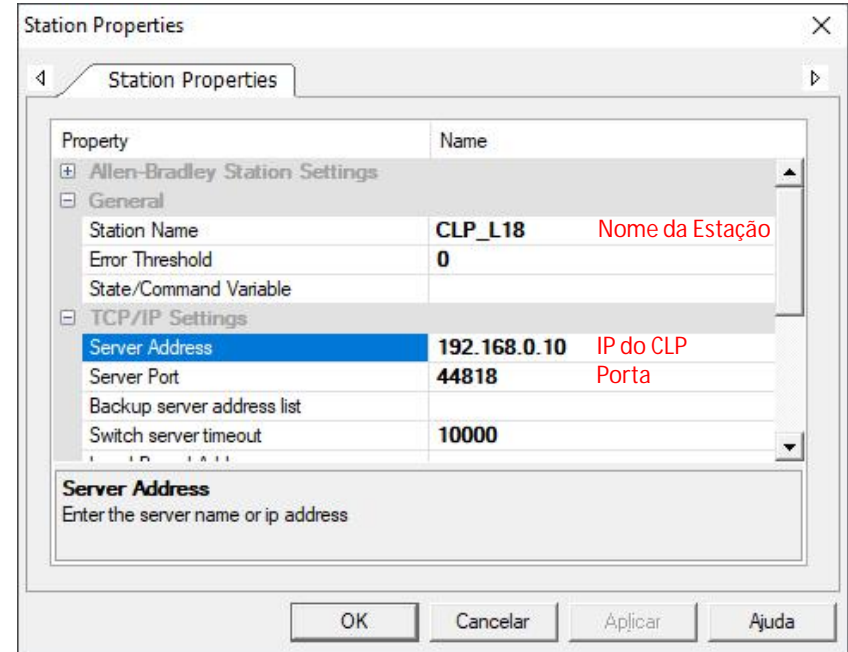
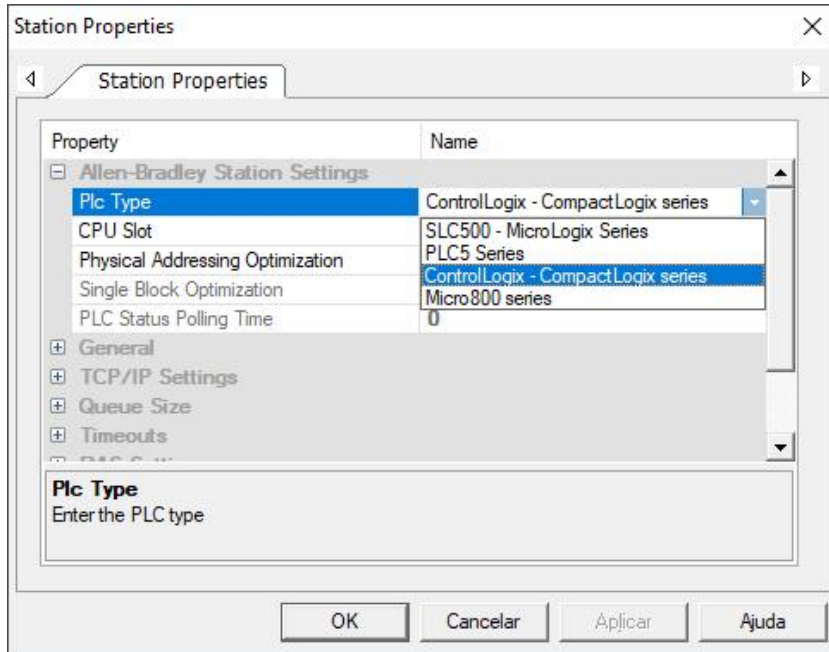
Configurando o Drive de Comunicação



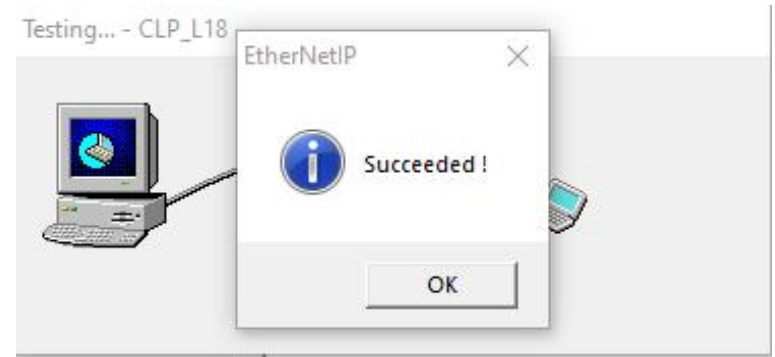
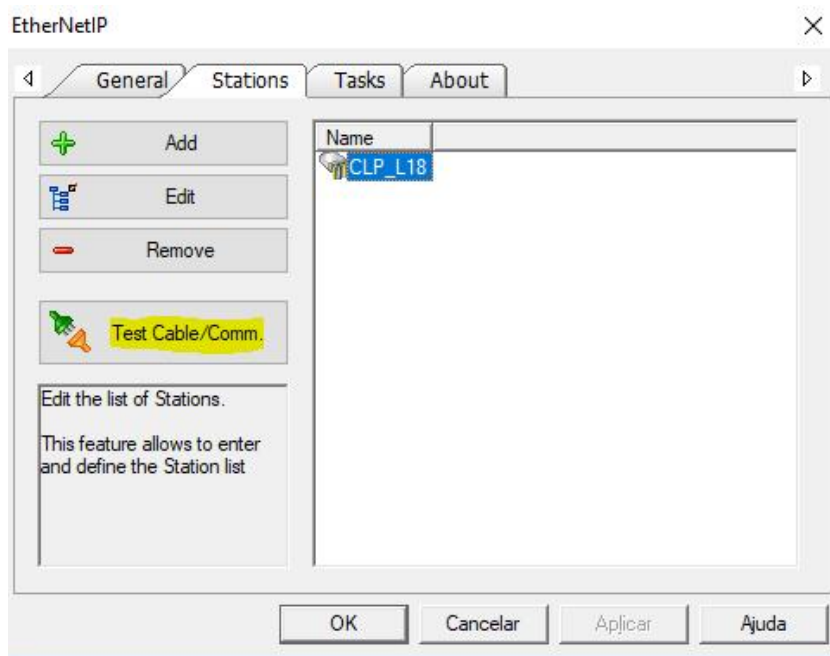
Configurando o Drive de Comunicação



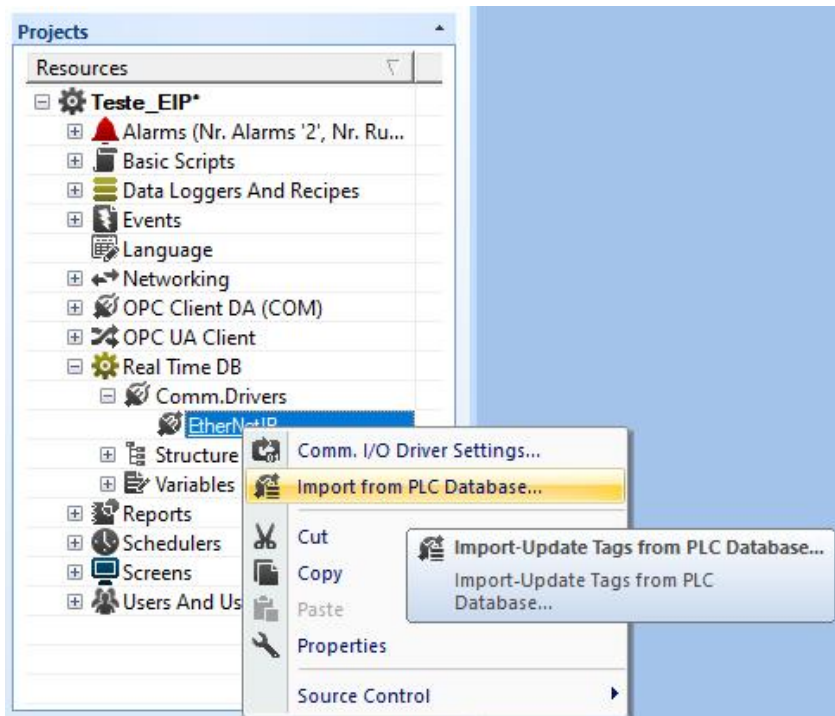
Configurando o Drive de Comunicação



Testando Conexão do Drive de Comunicação



Leitura das TAGS diretamente do CLP



Scope: MainProgram Show: All Tags

Name	Alias For	Base Tag	Data Type
+ AUX_1			DINT
+ AUX_2			DINT
+ CONT_1			COUNTER
+ CONT_2			COUNTER
LED			BOOL
+ NIVEL			DINT
ON_OFF			BOOL
+ TON_1			TIMER
+ TON_2			TIMER

Leitura das TAGS diretamente do CLP

Import Device Variables

Filter: Name

Name	Type	Address	Size	Description
------	------	---------	------	-------------

Add Station Name Please select the Device Station: **CLP_L18**

Import Device Variables - 1769-L35E/A LOGIX5335E - 192.168.0.10

Filter: Name

Name	Type	Address	Size	Description
<input checked="" type="checkbox"/> Program:MainProgram...	COUNT...	Program:MainProgram...	17	Program:MainProgram.CONT...
<input checked="" type="checkbox"/> Program:MainProgram...	TIMER	Program:MainProgram...	15	Program:MainProgram.TON_...
<input checked="" type="checkbox"/> Program:MainProgram...	TIMER	Program:MainProgram...	15	Program:MainProgram.TON_...
<input checked="" type="checkbox"/> Program:MainProgram...	COUNT...	Program:MainProgram...	17	Program:MainProgram.CONT...
<input checked="" type="checkbox"/> Program:MainProgram...	BOOL	Program:MainProgram...	1	Program:MainProgramProgra...
<input checked="" type="checkbox"/> Program:MainProgram...	DINT	Program:MainProgram...	4	Program:MainProgramProgra...
<input checked="" type="checkbox"/> Program:MainProgram...	BOOL	Program:MainProgram...	1	Program:MainProgramProgra...
<input checked="" type="checkbox"/> Program:MainProgram...	DINT	Program:MainProgram...	4	Program:MainProgramProgra...
<input checked="" type="checkbox"/> Program:MainProgram...	DINT	Program:MainProgram...	4	Program:MainProgramProgra...

Add Station Name Please select the Device Station: **CLP_L18**

Importar as TAGS para o projeto

Import Device Variables - 1769-L35E/A LOGIX5335E - 192.168.0.10

Filter: Name

Name	Type	Address	Size	Description
Program:MainProgram...	COUNT...	Program:MainProgram...	17	Program:MainProgram.CONT...
Program:MainProgram...	TIMER	Program:MainProgram...	15	Program:MainProgram.TON...
Program:MainProgram...	TIMER	Program:MainProgram...	15	Program:MainProgram.TON...
Program:MainProgram...	COUNT...	Program:MainProgram...	17	Program:MainProgram.CONT...
Program:MainProgram...	BOOL	Program:MainProgram...	1	Program:MainProgramProgra...
Program:MainProgram...	DINT	Program:MainProgram...	4	Program:MainProgramProgra...
Program:MainProgram...	BOOL	Program:MainProgram...	1	Program:MainProgramProgra...
Program:MainProgram...	DINT	Program:MainProgram...	4	Program:MainProgramProgra...
Program:MainProgram...	DINT	Program:MainProgram...	4	Program:MainProgramProgra...

Add Station Name Please select the Device Station: CLP_L18

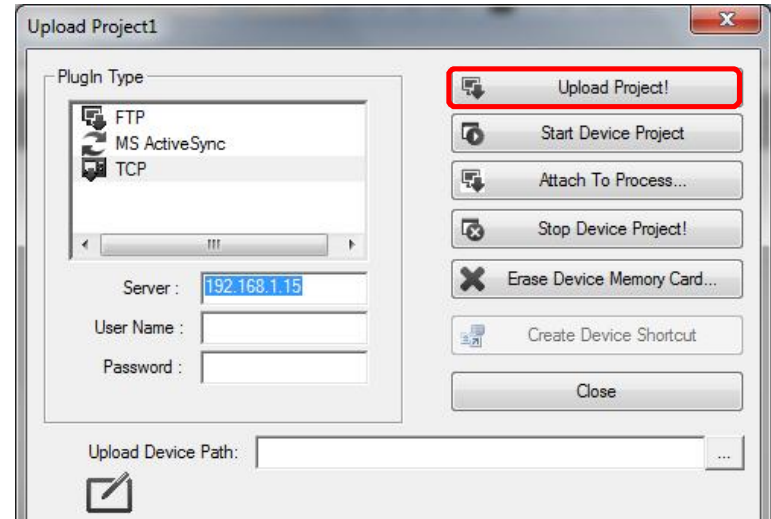
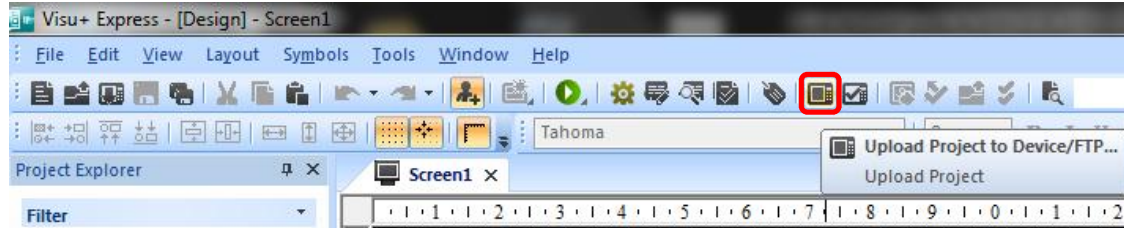
Import Device Variables - 1769-L35E/A LOGIX5335E - 192.168.0.10

Filter: Name

Name	Type	Address	Size	Description
Program:MainProgram...	COUNT...	Program:MainProgram...	17	Program:MainProgram.CONT...
Program:MainProgram...	TIMER	Program:MainProgram...	15	Program:MainProgram.TON...
Program:MainProgram...	TIMER	Program:MainProgram...	15	Program:MainProgram.TON...
Program:MainProgram...	COUNT...	Program:MainProgram...	17	Program:MainProgram.CONT...
Program:MainProgram...	BOOL	Program:MainProgram...	1	Program:MainProgramProgra...
Program:MainProgram...	DINT	Program:MainProgram...	4	Program:MainProgramProgra...
Program:MainProgram...	BOOL	Program:MainProgram...	1	Program:MainProgramProgra...
Program:MainProgram...	DINT	Program:MainProgram...	4	Program:MainProgramProgra...
Program:MainProgram...	DINT	Program:MainProgram...	4	Program:MainProgramProgra...

Add Station Name Please select the Device Station: CLP_L18

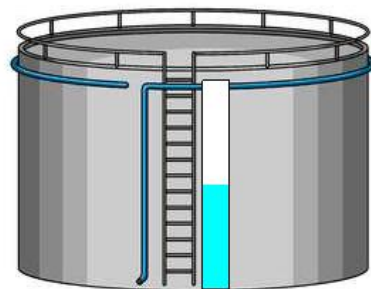
Fazer Download do Projeto para a IHM BTP



BTP 2070W com CLP CompactLogix



LIGA / DESLIGA



**PHOENIX
CONTACT**
INSPIRING INNOVATIONS

Pronto!!!

O Drive e as TAGS estão configuradas
Já pode iniciar o desenvolvimento da interface gráfica.



INSPIRING INNOVATIONS

www.phoenixcontact.com.br